

## Some research examples

*Jon Claerbout*

SEP students and researchers have extended the work described in this book. A few of their results are summarized here without the details and working codes.

### GULF OF MEXICO CUBE

David Lumley from Chevron gave James Rickett some nice 3-D data from the Gulf of Mexico. The movie shows time slices at intervals of about 6ms. These slices are about 18 feet apart. That is about 7,000 years of deposition in the Gulf of Mexico. Altogether it is about a million years (about the age of the human species). Figure 1 shows some nice time slices.

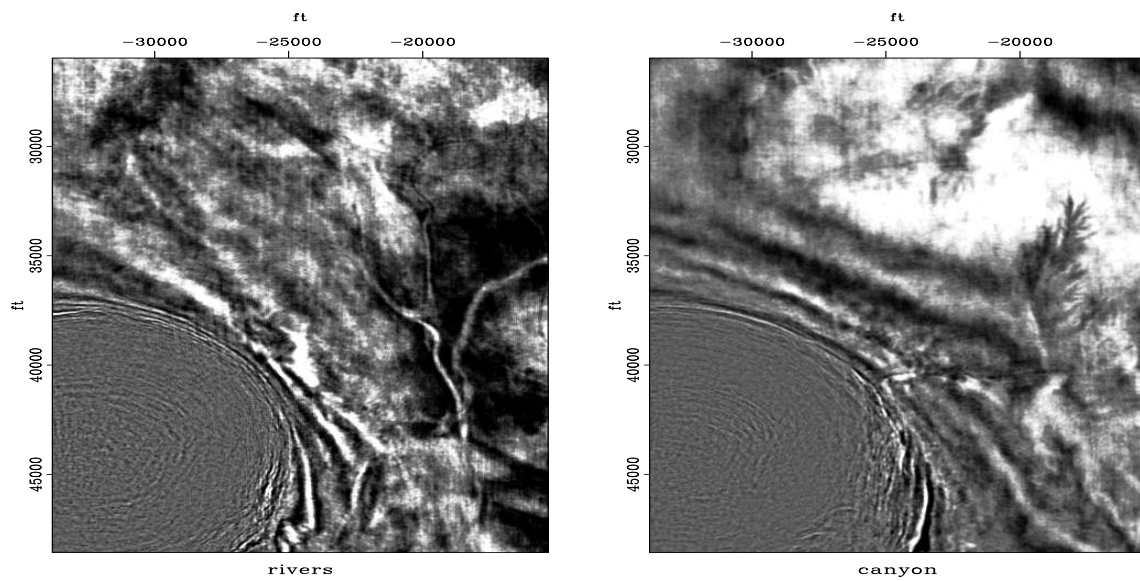


Figure 1: Some time slices show a salt dome, some river channels, a dendritic drainage canyon, and a fault.